

REHABILITATION, MODERNIZATION, DEVELOPMENT AND EQUIPPING OF “HARAP-ALB” MULTIFUNCTIONAL CENTER

Project implemented through a grant awarded by REGIO – Regional Operational Programme 2007–2013, Priority Axis 3 “Improving social infrastructure”, Key Area of Intervention 3.2 for “Rehabilitation / modernization / development and equipping of social services infrastructure”.



The General Direction for Social Care and Child Protection

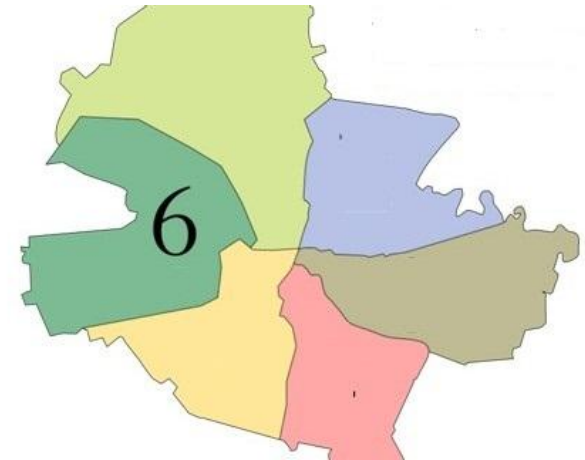
- 6th District, Bucharest -

GENERAL PRESENTATION

The General Direction for Social Care and Child Protection 6th District is a public institution of local interest with responsibility in social development and welfare of the community.

Our responsibility translates to vulnerable social cases identification and implementation of the social measures aiming to prevent the risk situations, to protect the underprivileged people as children in difficulty, families with problems, lonesome people, elderly people, disabled people or other people in need.

At the 6-th District level the institution unfolds activities in order to achieve social policies and prevention strategies goals as well as fighting against the social risk factors, to inform and strengthen the citizens, to initiate and implement the social care programs and to bring on public or private partners working together to safeguard the children and adults in need.



Categories of beneficiaries:

The General Direction of Social Care and Child Protection – 6th District, Bucharest region, offers social care services to the following target groups:

- under-privileged, marginalized, discriminated people;
- Elderly in need;
- people in poverty;
- people and families in difficulty;
- disabled children and adults;
- children victims of abuse, maltreatment or in danger to be separated from the family;
- children with behavior issues;
- abandoned children.



What services do we offer?

Child Care

- Protection measures in order to prevent the child separation from the family;
- Foster Families;
- Family reintegration of the under-privileged children protected in residential facilities or family placement;
- Protection measures including extended family protection or adoption;
- Protection measures for the homeless and children victims of abuse;
- Psychological and legal counseling;
- Support, residential care and school guidance for the disabled children;
- Alternative protection and prevention measures as: day care-centers for pupils and street children;
- Cultural and sport specific programs aiming the social integration and risk factors prevention.



Adult Care

- Care and support for the elderly, socially isolated people, people in difficult situations or with disabilities;
- Social-medical care for elderly and lonesome people;
- Promote and advocate for the human rights;
- Prevent and fight against the social marginalization and ethnic based discrimination;
- Financial support for housing (rent), special support;
- Recovery services, treatment, social reintegration for people with disabilities;
- Social, psychological and legal counseling;
- Promote and defend the rights of people with disabilities;
- Involving elderly people in cultural and sports activities for the purpose of social integration and active aging.



DGASPC 6th District is the beneficiary of European funds obtained within 8 projects to facilitate social and professional integration of vulnerable groups, such as:

- Underprivileged Women
- People with disabilities
- Roma Citizens
- Single parent families or with many children
- Drug addicts
- People in detention

Total number of beneficiaries from vulnerable groups: 5520

Total project value: 60.263.863 lei, 13.634.358 Euro

Analysis of children aged 0 to 4 years in the 6th District

- From a total of 371,819 inhabitants, a total of 19,559 are children aged 0 - 4 years.
- Of these, only 15% are enrolled in childcare centers type, most receiving family care, (the mothers who give up work or grandparents)
- Annually, DGASPC 6th District rejects about 1,500 applications for registration in nursery centers type coming from parents with children in this age group

Early care in Bucharest , the evolution of nursery centers

Development regions	Years							
	2005	2006	2007	2008	2009	2010	2011	2012
Bucharest – Ilfov	20	22	21	21	19	20	20	22
Region								

In urban areas the demand for places in institutions providing nursery care type of children is higher than in rural and fails completely to meet the needs of the population. The increased demand for childcare services is due to the increased birth to rural and availability of parents to integrate / reintegrate the labor market quickly.

Educational line of children aged up to 6 years old

According to a study, 90% of parents are unhappy with the lack of places in nurseries in 6th District, this situation being reflected in the entire urban area of Romania

	0-1yo	1-2yo	2-3yo	3-4yo	4-5yo	5-6yo
Parenthood care	96.2	87.9	57.8	17.8	7.8	6.6
Grandparents	2.1	7.2	16.4	5.2	1.3	1
Babysitter	0.3	1	1.5	0.5	0.1	0.2
Neighbour /acquaintance	0.1	0.1	0.6	0.4	0.3	0
Nursery	0.2	3	20.8	0	0	0
Kindergarten	0	0.1	1	74.2	88.5	90.4
Another	0.2	0.2	0.3	0.2	0.1	0.3
Don't know / No answer	0.8	0.6	1.6	1.6	1.9	1.5

The main reason for their uncoverage is the age, where once again appears the need to develop the network of units for preschool age child care (nursery).

In turn, the phenomenon of children with parents working abroad makes many children in the age group 0-4 years being left in the care of relatives who have no time or ability to care for their early education.



Diversification of services that provide early childhood care- an European must

According to the policies and recommendations of the European Union in the field, a number of priorities are directly related to care stimulation of under 4 year old children in specialized educational services. Among these priorities we mention:

- Integration and reintegration of women into the labor market
- Reconciling family and professional life enabling all employees with children to return to the labor market after completing leave and child care increase
- increasing the accessibility of this type of service in terms of financial
- inclusion of preschool children in educational childcare facilities as follows: 90% of children aged between 3 and school year (which differs between Member States, between 5 and 7 years) and 33% for children up to 3 years .
- In turn, European Commission Communication Early Childhood Education and Care: Providing all our children with the best start for the world of tomorrow (February 2011) urges Member States to work towards universal access to preschool education. Commission communication highlights the positive effects of preschool education and stresses that we have to enhance the quality of education of this type, along with their availability.

“HARAP ALB” Multifunctional Social Center

13 Estacadei Str., 6th District, Bucharest, Romania
Bucharest-Ilfov Region

The most important thing that this projects aims to is to transform the actual unit into a multifunctional center which will cover a variety of vital services including health, education, social care and public security in accordance with the EU rules.

By doing that we are reaching the European objective of economical and social cohesion.



ANNUALLY:

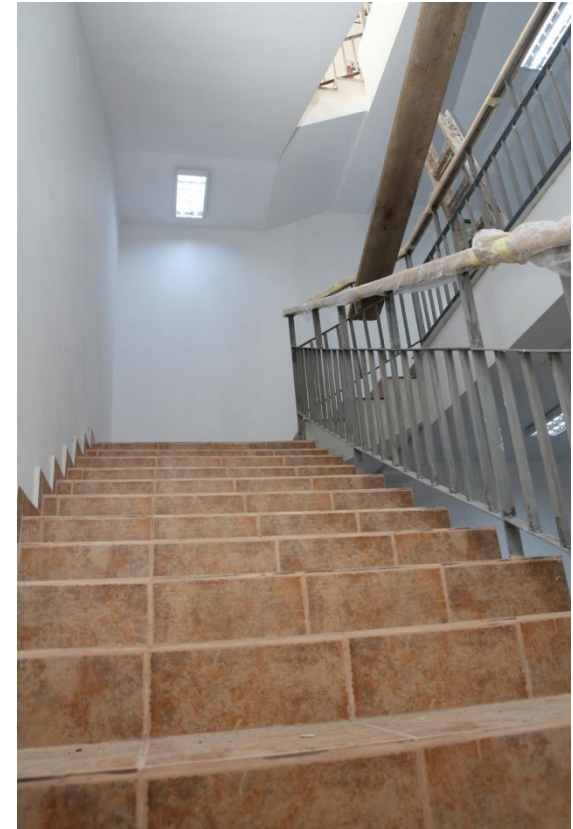
➔ **A total of 290 children aged over 1 year will receive early education and care in “Harap Alb” Multifunctional Social Center**

➔ **Over 6000 adults will receive counseling and reintegration services offered at the center**

➔ **Approximately 1920 parents will receive group therapy and free training**



- **The total value of investment**– 3.997.361,96 lei (~888.302,658 euro)
- **Period to implement** - 18 months
- **Funding sources:**
 - The European Regional Development Fund - 3.108.114,10 lei (~ 690.692 euro)
 - National Budget – 412.300,80 lei
 - Cofunding Local Budget – 63.430.90 lei





- **Increasing the capacity to accommodate with 30 % of the nursery**

• **A new dimension of prevention: programs for the community (information campaigns to popularize the services and opportunities, counseling), training for parents and leisure activities for children**

Counselling and support for parents through specialized personnel; early detection of risk situations that can lead to the separation of children from their parents



- Extending existing building by constructing a new module and restructuring existing space; optimize the use of space with the working law.
 - Footprint – 372,5 sqm
 - The total surface – 1006 sqm
 - Extending space for social services:
 - One medical office
 - Children insulator
- New Bedrooms - 4 (12 children per room)
New counseling /educational offices - 4
Reception and guest room



**A terrarium on the roof with an area of over 250 square meters,
which includes a greenhouse with different plant species, ecological crossing
paths**



Making access ramps for disabled people inside and outside the building



Installation of photovoltaic panels on the roof that will feed green energy to the building and reduces energy consumption by 20%

The General Direction for Social Care and Child Protection 6th District, Bucharest

Headquarters

- General Manager – Marius Lăcătuș
- Adress: 38-40 Cernișoara Str., 6th District, zipcode:061019
- Phone/Fax: 021/7457237; 021/7456229

The Social Care Direction

- Deputy General Manager– Alina Simion
- Adress: 7A Floare Roșie Str., 6th District, zipcode: 062261
- Phone/Fax: 021/4103020

www.asistentasociala6.ro

office@dgaspc6.com

The Economic Department

- Deputy General Manager– Gabriela Schmutzer
- Adress: 38-40 Cernișoara Str., 6th District, zipcode: 061019
- Phone/Fax: 021/7457237; 021/7456229

The Child Protection Direction

- Executive Manager– Nicolae Gorunescu
- Adress: 2 Drumul Sării Str., 6th District, zipcode: 060154
- Phone: 021/3176311; Fax: 021/3176312